

PRETERM AND HOSPITALIZED NEWBORN HEALTH

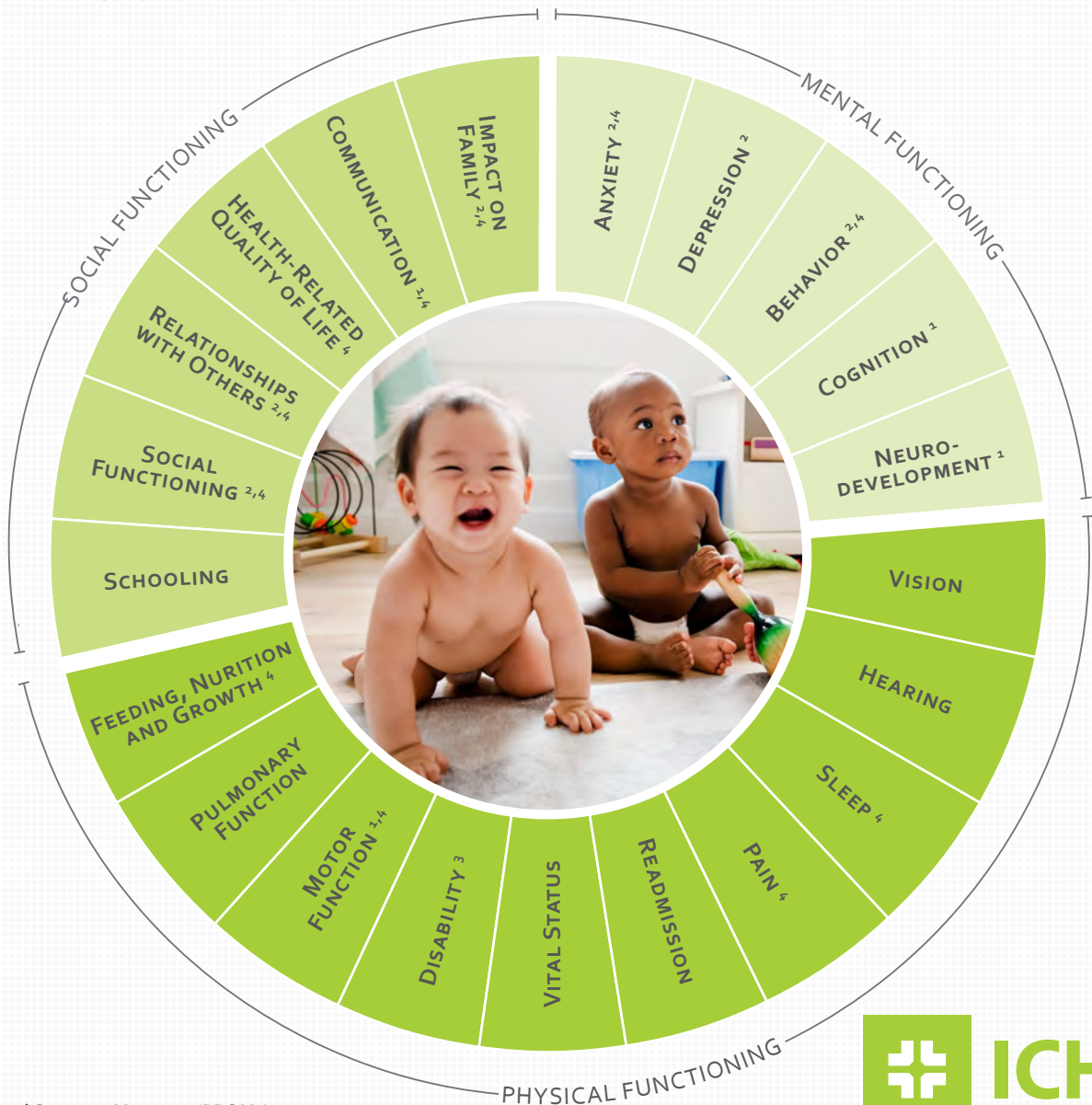
Health States: Preterm with no lower limit | Hospitalized neonates

Excluded Conditions: Diagnosis of genetic disease or severe malformation | Rare conditions (1:2000)

Treatment Approaches: Physical Functioning | Mental Functioning | Social Functioning

Stages: From birth to 5 years of age

For a complete overview of this Set, including definitions for each measure, time points for collection, and associated risk factors, visit <https://www.ichom.org/portfolio/preterm-and-hospitalized-newborn-health/>



Patient Reported Outcome Measures (PROMs)

- ¹: Measured by the PARCA-R
- ²: Measured by the Strengths and Difficulties Questionnaire for 2-4 year olds
- ³: Measured by the Modified Checklist for Autism in Toddlers, Revised
- ⁴: Measured by the TNA-AZL Preschool Children Quality of Life Questionnaire

ICHOM Set

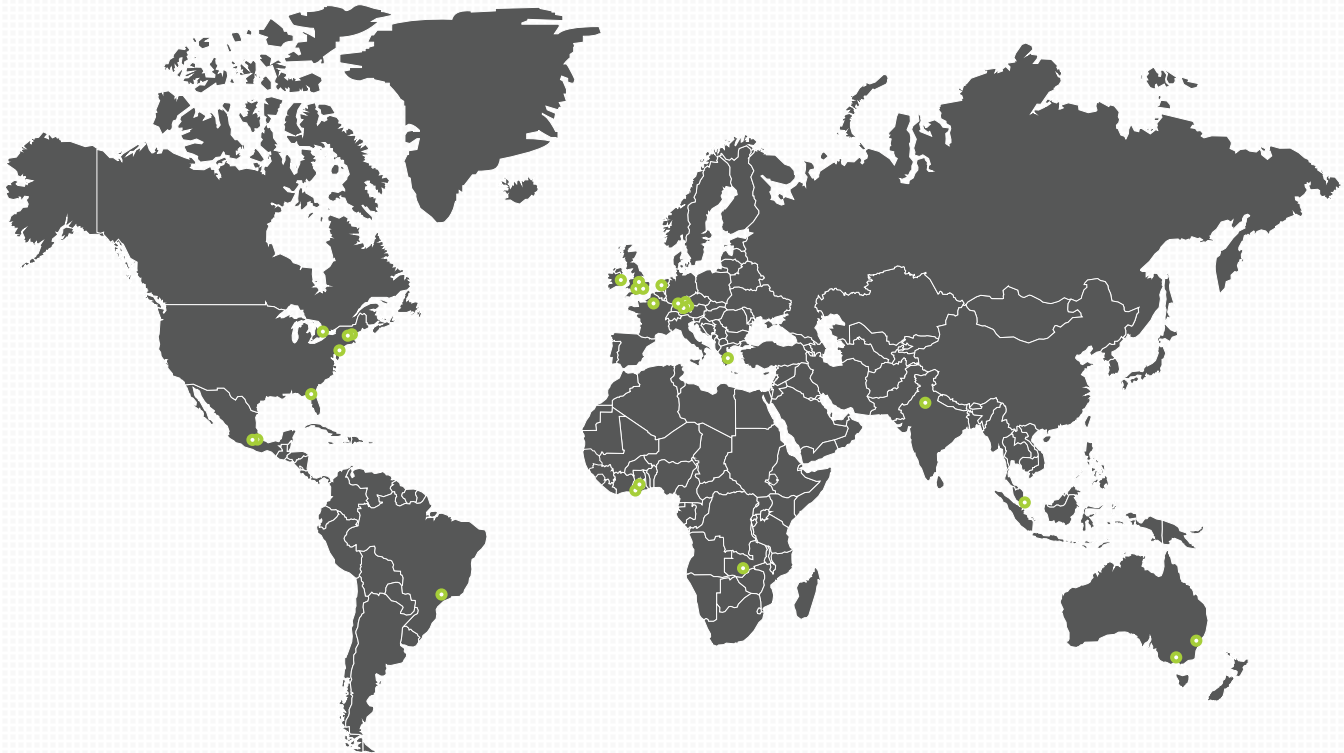
CONTRIBUTORS

For more information about the process of developing a Set of Patient-Centered Outcome Measures, visit ichom.org/our-work/

The Sponsors



The Working Group



Project Team

Chair | Andreas W. Flemmer | Div. Neonatology, Dr. v. Hauner Children's, LMU University Hospital Munich
Research Fellow | Esther Schouten | Div. Neonatology, Dr. v. Hauner Children's, LMU University Hospital Munich
Research Fellow | Johanna Steckermeier | Div. Neonatology, Dr. v. Hauner Children's, LMU University Hospital Munich
Project Manager | Jessily P. Ramirez | ICHOM
Project Manager | Nick Sillett | ICHOM
Research Associate | Christina Nielsen | ICHOM

Australia

Jeanie Cheong | Murdoch Children's Research Institute
Kylie Pussell | Miracle Babies Foundation*

Brazil

Alicia Matijasevich | Departamento de Medicina Preventiva, Faculdade de Medicina FMUSP, Universidade de São Paulo

Canada

Linda Johnston | University of Toronto

France

Jennifer Zeitlin | Inserm

Germany

Silke Mader | European Foundation for the Care of Newborn Infants (EFCNI)*

Ghana

Selina Bentoom | African Foundation for Premature Babies and Neonatal Care*
Kojo Yeboah-Antwi | Father Thomas Alan Rooney Memorial Hospital

Greece

Eleni Vavouraki | Ilitominon*

India

Arti Maria | Dr. Ram Manohar Lohia Hospital

Mexico

Ileín Bolaños González | Con Amor Vencerás*
Naira Pereyra | Hospital Star Medica Infantil

Netherlands

Jasper Been | Erasmus MC - Sophia Children's Hospital

Republic of Ireland

Mandy Daly | Irish Neonatal Health Alliance*

Singapore

Rashmi A. Mittal | KK Women's and Children's Hospital

United Kingdom

James Webbe | Imperial College London
Dieter Wolke | University of Warwick

United States

Haresh Kirpalani | Children's Hospital of Philadelphia
Josef Neu | University of Florida

Zambia

Kunda Mutesu-Kapembwa | University Teaching Hospital /Women and Newborn Hospital, Neonatology Department

*Patient representative