

ICHOM Patient-Centered Outcomes Measure for

NEURODEVELOPMENTAL DISORDERS

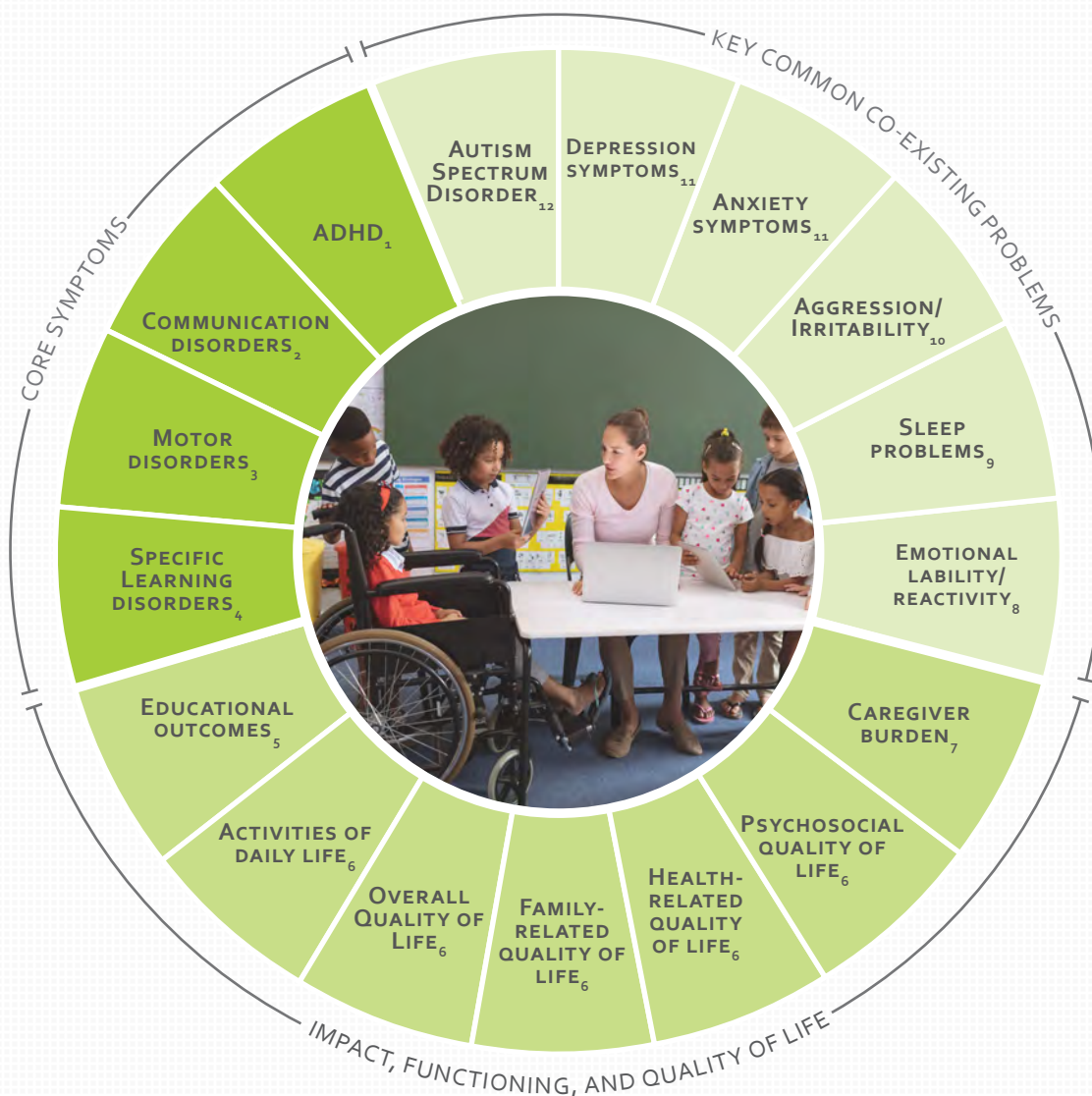
Conditions: ADHD | Communication Disorders | Motor Disorders | Specific Learning Disorders

Populations: Children and adolescents aged ≥ 3 to ≤ 20 years

Treatment approaches covered: All treatments

Excluded conditions: All other neurodevelopmental disorders

For a complete overview of this Set, including definitions for each measure, time points for collection, and associated risk factors, visit <https://connect.ichom.org/patient-centered-outcomes-measures/congenital-upper-limb-anomalies/>



Details

- 1 Includes ADHD symptoms.
- 2 Includes Language Difficulties, Social (Pragmatic) Communication Difficulties, Fluency Difficulties, and Speech Sound Difficulties.
- 3 Includes Vocal and Motor Tic Frequency and Severity, Fine Motor Skills, Gross Motor Skills, and Coordination.
- 4 Includes Reading Accuracy, Reading Comprehension, Global Maths Ability, and Global Writing Ability.
- 5 The Working Group has not recommended an outcome measure at this time as no appropriate measure was found.
- 6 Tracked via KIDSCREEN-10
- 7 Tracked via Family Strain Index
- 8 Tracked via Affective Reactivity Index
- 9 Tracked via Children's Sleep Habits Questionnaire
- 10 Tracked via Swanson, Nolan, and Pelham Rating Scale (Oppositional Defiant Disorder scale)
- 11 Tracked using the ICHOM Pediatric Depression & Anxiety Set
- 12 Tracked using the ICHOM Autism Spectrum Disorders Set



Neurodevelopmental Disorders

Revised: 21.07.2022

ICHOM Set

CONTRIBUTORS

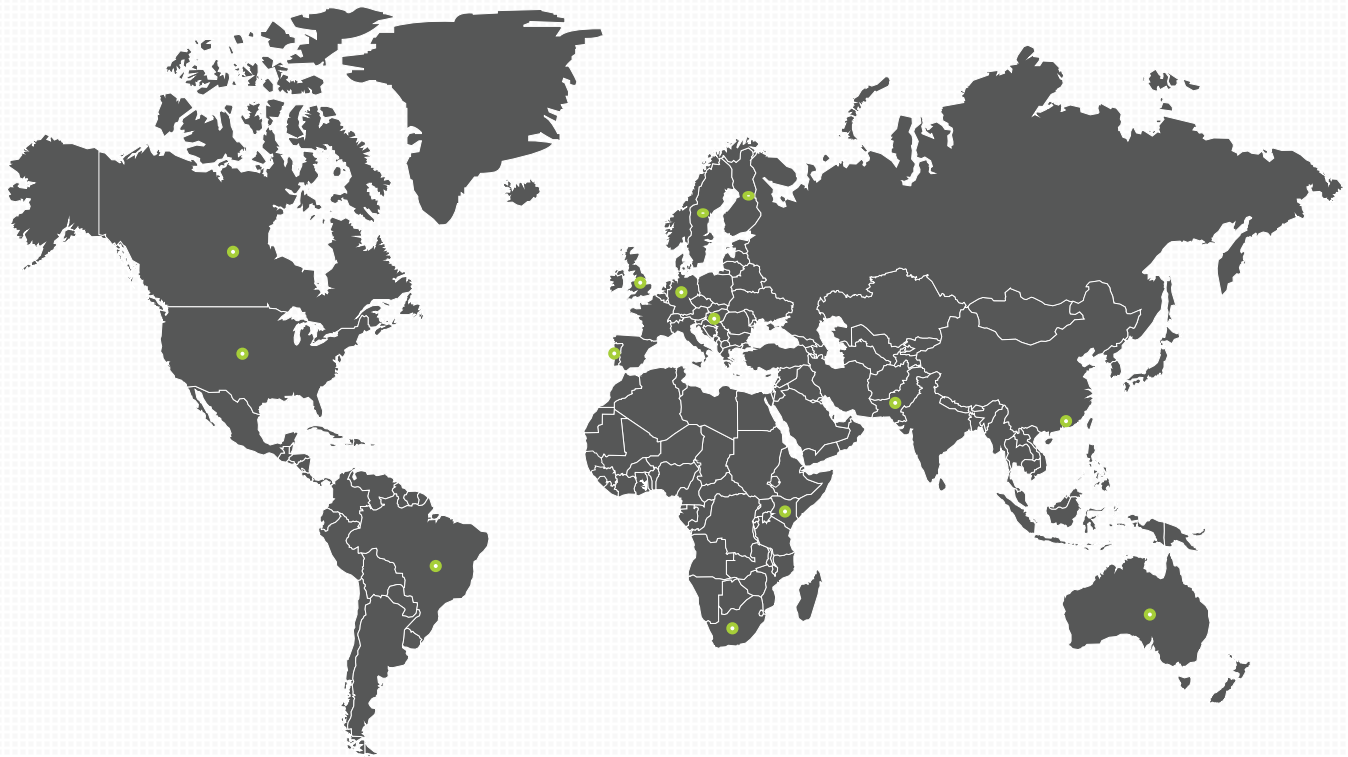
For more information about the process of developing a Patient-Centered Outcomes Measure, visit ichom.org/how-we-work/

The Sponsors

The Neurodevelopmental Disorders Set is made possible only through the Support of NHS England and NHS Impementation.

Thank you.

The Working Group



Project Team

Chair | David Coghill | University of Melbourne
Research Fellow | Melissa Mulraney | ISN Psychology
Project Manager | Andria Johnson | ICHOM
Project Manager, Research Associate | Umanga de Silva | ICHOM
Director | Luz Sousa Fialho | ICHOM

Australia

Adam Guastella | Child and Youth Mental Health
Caroline Tehan*
Iain Dutia | Australian Catholic University
Jonathan Payne | Murdoch Children's Research Institute
Mark Bellgrove | Turner Institute for Brain and Mental Health and School of Psychological Sciences, Monash University

Natalie Munro | The University of Sydney
Tamasin Meller | Child Development Service

Brazil

Guilherme V. Polanczyk | University of São Paulo Medical School

Canada

Peter Szatmari | Hospital for Sick Children, Toronto

Hong Kong

Phyllis Chan | Queen Mary Hospital

Germany

Tobias Banaschewski | Central Institute of Mental Health

Hungary

Peter Nagy | Bethesda Children's Hospital
Budapest

Kenya

Susan Wamithi | Aga Khan University Hospital

Pakistan

Sidra Kaleem | Aga Khan University Hospital

Portugal

Cláudia Bandeira de Lima | Institute for Evidence Based Healthcare at University of Lisbon School and Medicine

South Africa

Petrus de Vries | University of Cape Town

Sweden and Finland

Juulia Järvidike | WeMind and WeMind Suomi Oy

United Kingdom

Alison Clink*
Eileen Daly | King's College London
Emily Simonoff | King's College London
Mark Lovell | Royal College of Psychiatrists
Melissa Gladstone | University of Liverpool
Samuele R. Chamberlain | University of Southampton
Samuele Cortese | University of Southampton

United States

Ivy Chong | The May Institute, Inc
Jeffrey Newcorn | Icahn School of Medicine at Mount Sinai
Karin Walsh | Children's National Research Institute
Stephen V. Faraone | SUNY Upstate Medical University

*Patient representative