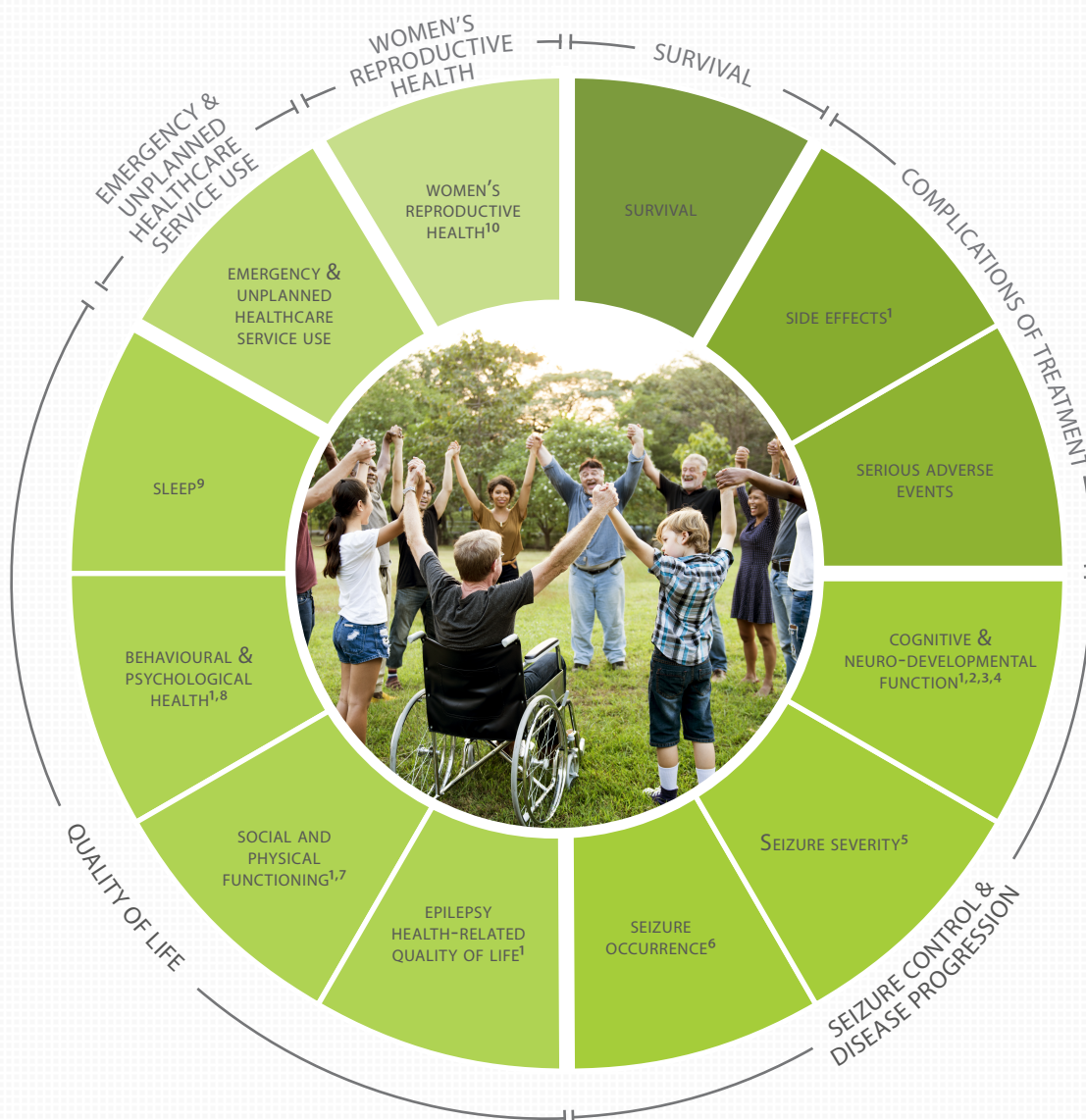


ICHOM Set of Patient-Centered Outcome Measures for PEDIATRIC AND ADULT EPILEPSY

Conditions: All people with Epilepsy, including drug-refractory epilepsy and Developmental and Epileptic Encephalopathy (DEE).

Populations: Adults and Children from 1 month old

For a complete overview of this Set, including definitions for each measure, time points for collection, and associated risk factors, visit [\[LINK\]](#)



Details

¹ Epilepsy health-related quality of life reported with QOLIE-10 in adults, and QOLCE-16 (parent-report) or CHEQOL-25 (self-report) in children and adolescents.

² Including Behavioural development, Motor development, and Cognitive development (pediatrics only), & Attention/Inattention and Memory Impairment (all patients).

³ Memory Impairment & Attention/Inattention reported with the PROMIS v2.0 Cognitive Function SF 4a in adults, and CHEQOL-25 in children and adolescents.

⁴ Behavioural development, Motor development, and Cognitive development measured using the mCHAT (16-48 months) or national assessment methods (>48 months).

⁵ Including Prolonged/recurrent clustered seizures requiring emergency treatment, Seizure-related injury and Incontinence. Optional patient-report with the LSSS 2.0 in adults.

⁶ Including seizure type, Seizure frequency, Seizure freedom, Emergence of new seizure type

⁷ Including impact of epilepsy on education/work and daily life activities

⁸ Depression and Suicidality reported with the PHQ-9 in adults. Depression measured with the PROMIS Pediatric Item Bank v2.0 – Depressive Symptoms/Parent Proxy Item Bank/ Early Childhood Parent Report SF 4a in children and adolescents. Suicidality in children and adolescents reported with the ASQ. Anxiety reported with the GAD-2 in adults, and PROMIS Anxiety Item Bank SF 8a/Parent proxy SF 8a/Early Childhood Parent Report SF 4a in children and adolescents.

⁹ Including Sleep Adequacy. Reported by the PROMIS Sleep Disturbance 4a in adults, and the PROMIS Pediatric Sleep Disturbance 4a in children and adolescents.

¹⁰ Including pregnancy and delivery complications, and congenital malformations in offspring. Only measured in women of a reproductive age.



ICHOM
PEDIATRIC AND
ADULT EPILEPSY

Revised: 03.02.2023

ICHOM Set

CONTRIBUTORS

For more information about the process of developing a Set of Patient-Centered Outcome Measures, visit ichom.org/our-work/

The Sponsors

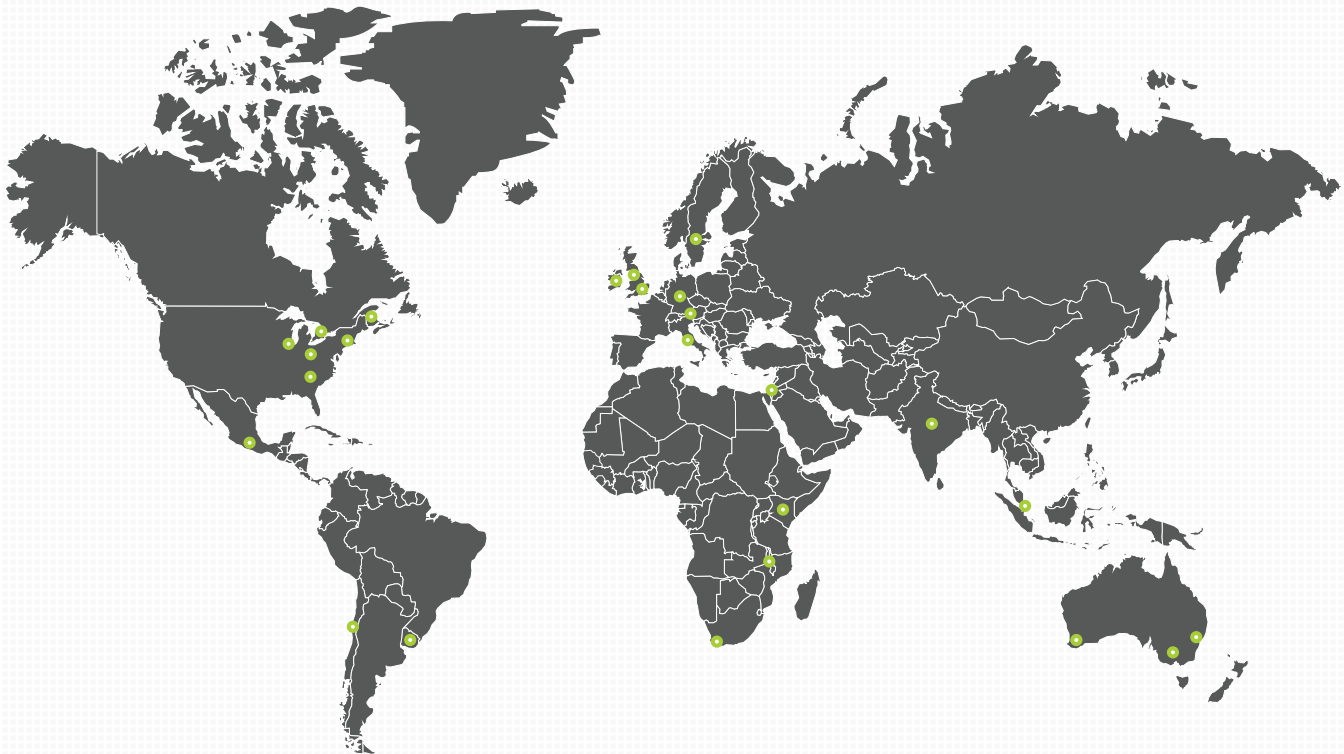


**KK Women's and
Children's Hospital**
SingHealth

LivaNova
Health innovation that matters



The Working Group



Project Team

Chair | Professor Anne Berg | Northwestern University
Research Fellow | Dr James Mitchell | University of Liverpool
Project Manager | Frieda Sossi | ICHOM
Research Associate | Isabel Miller | ICHOM
Research Associate | Paula Blancarte Jaber | ICHOM

Australia

Christian Gericke | The University of Queensland, Brisbane, Australia
Emilio Perucca | Department of Medicine (Austin Health), The University of Melbourne, and Department of Neuroscience, Central Clinical School, Monash University, Melbourne, Australia

Austria

Tim von Oertzen | Department of Neurology, Kepler University Hospital, Linz, Austria

Canada

Gabriel Ronen | McMaster University, department of Pediatrics, and CanChild Centre for Childhood Disability Research, Hamilton, Ontario, Canada
Cassidy Megan* | Founder of Purple Day

Chile

Tomás Mesa | Universidad Católica de Chile. IBE Chilean Chapter

Germany

Leonie Wollscheid*

India

Mamta Bhushan Singh | All India Institute of Medical Sciences, New Delhi, India

Ireland

Lorraine Lally*

Israel

Bruria Ben Zeev | Safra pediatric hospital, Sheba Medical Centre, Sackler School of Medicine Tel Aviv University

Italy

Francesca Sofia* | International Bureau for Epilepsy

Kenya

Sharon Mbugua* | Mental Health Alliance of Kenya

Malawi

Action Amos* | International Bureau of Epilepsy/University of Edinburgh

Mexico

Lilia Nuñez-Orozco | Nacional Medical Center "20 De Noviembre, Mexico City

Singapore

Derrick Wei Shih Chan | KK Women's and Children's Hospital

South Africa

Jo M Wilmshurst | University of Cape Town
Sharlene Andrea Cassel* | Epilepsy SA

Sweden

John Eric Chaplin | Sahlgrenska Academy at Gothenburg University

UK

Angela Audrey Pullen* | Formerly Epilepsy Action, Employed by Epilepsy Research UK Board Director
HealthWatch Leeds
Gus Baker | University of Liverpool
Helen Cross | UCL GOS Institute of Child Health

USA

Aatif M. Husain | Duke University Medical Center
Jeffrey Bolton | Boston Children's Hospital; Harvard Medical School
Joan K Austin | Indiana University School of Nursing
Martha Sajatovic | Case Western Reserve University
Scott Badzik*

*Patient representative